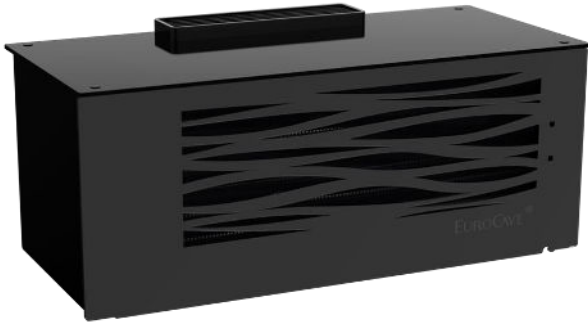


TAHOMA

Wine cellar conditioner
Small areas from 2 to 20 m³



Ref. CCTAHO-230V

2 YEAR
WARRANTY

MADE IN FRANCE

GENERAL FEATURES

Outer unit dimensions (mm) Packaged outer unit dimensions (mm)	H 700 x L 452 x W 334 H 706 x L 530 x W 400
Inner unit dimensions (mm) Packaged inner unit dimensions (mm)	H 295 x L 693 x W 310 H 402 x L 800 x I 400
Net weight (kg) Gross weight packaged (kg)	30 (ext) + 9 (int) 39 (ext) + 16 (int)
Outer unit voltage and frequency supply	230V-50Hz
Refrigerating power (W)	440*
Instantaneous electric power (W)	564
Outer unit heat release (W)	1 420
Refrigerant fluid	R290 (ext.)/H2O (int.) 30L capacity
External temperature range	-8°C**/ +35°C (17,6°F/95°F)
Sound emission Inner unit Speed 2-4-6	50-56-60 dB(A)
Sound emission Outer unit Pump inactive - active	62-63 dB(A)

SPECIFICITIES

COMPACT DESIGN

- Adapted to small spaces from 2m³ up to 20m³. Compatible for environments such as cabinet / showcase

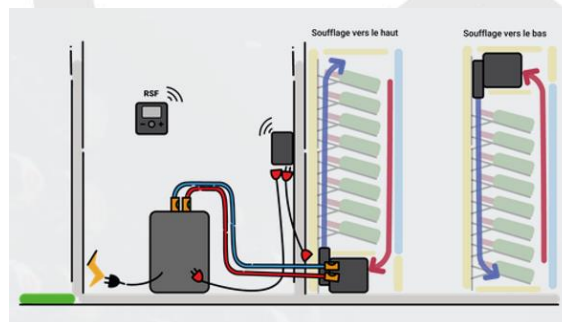
EQUIPMENT & FINISHES

- Tahoma cellar conditioner is made of: internal unit, external unit, connector kit
- Connector kit: 4-8-12-16m
- Wireless remote control. Distance monitoring of the wine room.
Temperature settings and display from 4 to 18°C – 39-64°F (Reco 8-18°C – 46-64°F)
Humidity display and adjustment (optional)
- 3 speeds (2-4-6): to manage the right ratio between “power/ volume/ acoustic level”. Recommended speed= 6
- Compatible accessories: anti-freeze liquid -18°C/0°F (20L), wall mounting support for inner unit, wall mounting support for outer unit, black lower covering for inner unit, draining pump and connector for humidifier (autonomous hygrometry management with setting adjustable from 20 to 80%. Recommended hygrometry setting between 60 and 75%)
- PMMA plastic cladding – Glossy black
- Removable front panel – magnetised
- Heat exchangers – Epoxy black painting

TECHNOLOGY

- 2 units: internal unit, external unit
- With a closed water circuit
- Manual hygrometry management with condensate water (autonomous management solution, optional)

INSTALLATION



4-STEP INSTALLATION

Blowing downwards or upwards.

- 1-Connection using electric and hydraulic connectors (Connection kit supplied with the appliance. Choice of 4, 8, 12 or 16 m)
- 2-Filling of the iced water loop (30L)
- 3-Turning on the installation
- 4-Starting and adjusting using the remote control