



## ModuloThèque

Solid oak modular storage system

### General features

Designation	1 basic module	1 pedestal module delivered with only 2 feet	1 corner basic module with 4 wedges	1 corner pedestal module	2 finish finish	1 bar module <sup>1</sup>
Material(s)	Solid oak « clear linseed » Oil finish	Solid oak « clear linseed » Oil finish	Solid oak « clear linseed » Oil finish	Solid oak « clear linseed » Oil finish	Solid oak « clear linseed » Oil finish	Solid oak « clear linseed » Oil finish
Dimensions (WxHxD) mm	584 x 587 x 584	584 x 162 x 584	584 x 587 x 698	584 x 162 x 698	584 x 85 x 20	540 x 70 x 540
Maximum capacity*	MV1: 99 bottles MV1L40: 49 bottles	-	44 bottles	-	27 bottles	-
Weight	11.60 kg	6.50 kg	13.50 kg	4.20 kg	0.90 kg	11.30 kg
References	MV1/MV1L40	MV2/MV2L40	MV16/MV16PL*	MV17	MV3	MV6
Designation	1 Rack module <sup>2</sup>	1 cross module <sup>2</sup>	1 horizontal bottle-rack <sup>3</sup>	1 pivoting bottle-rack <sup>3</sup>	1 vertical bottle-rack <sup>3</sup>	1 shelf module <sup>3</sup>
Material(s)	Solid oak « clear linseed » Oil finish	Solid oak « clear linseed » Oil finish	Solid oak « clear linseed » Oil finish	Steel wire	Solid oak « clear linseed » Oil finish	Solid oak « clear linseed » Oil finish
Dimensions (WxHxD)mm	543 x 582 x 543	544 x 550 x 168**	123 x 640 x 584	85 x 270 x 105	550 x 20 x 120	550 x 20 x 120
Maximum capacity*	12 bottles	72 bottles	8 bottles	1 bottle	4 bottles	4 bottles
Weight	20.20 kg	4.40 kg	7.20 kg	0.24 kg	1.30 kg	1.78 kg
References	MV8RACK	MV18	MV5 (magnum-compatible)	MV211	MV4	MV7 (set of 2 shelves)

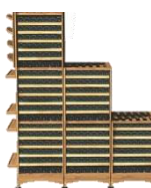
MV16-PL: Angle plate only

### Installations

- A choice of 15 modules
  - Width, Height, storage capacity, vary depending on the number of modules installed.
- Made of 20mm thick solid oak.
- The front panel of the sliding shelf MVMS is an oak material
- For the pedestal module, do not forget to add 2 feet (ref.MV9)



Around a pillar  
Ø 1800mm H2060mm



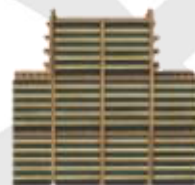
Sloping roof  
W1842 x D584 x H2008mm



Low ceiling  
W2426 x H1336 mm



Corner of a room  
Length 1<sup>st</sup> wall section : 2215,7mm  
Length 2<sup>nd</sup> wall section : W1631,7mm x D584 x H2008mm



Vaulted cellar  
W2426 x D584 x H2008mm

\* Traditional Bordeaux bottles – capacity varies depending on the configuration chosen. / \*\*Valid dimensions only when fitted into the basic module

<sup>1</sup>Exists in 400 mm width / <sup>2</sup>module that fits into the basic module, only on the base module (MV2) / <sup>3</sup>module that fits on the side of the module / <sup>4</sup>Flat dimensions

We recommend a maximum of 4 levels, to be fixed from the 2<sup>nd</sup> level. 5 levels are not possible taking into account of the weight of the base module which will have to support.



## ModuloThèque

Choice of shelves



Storage shelf\*  
AXUH



Sliding shelf\*  
MDS L60 ACMS



Sliding shelf  
MDS L40



AOPRESAR kit\*\*  
Compatible with MV1



\*ModuloThèque is also compatible with « Premium » shelves AXUH2 & ACMS2

\*\*Can only be attached using the guide referenced PGUIDAOPRES

### !!! IMPORTANT !!!

- Decide where you want the racking to be installed.
- Place the pedestal module(s) on a flat surface.
- Attach the basic module(s) to the wall (from the 2nd one up).
- Do not tighten the screws completely until assembly is complete.
- Do not pull out several shelves at the same time.
- Do not lean on the shelves.
- Do not sit on the bar module shelf.
- Do not climb on the side modules.